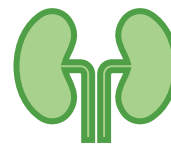


Don't Ignore Your Kidneys

Chronic Kidney Disease

In Missouri's Commercially Insured Population



Analysis completed by the Missouri Health Value Collaborative

Chronic kidney disease (CKD) occurs when kidneys are damaged and do not work as well over time, increasing risk of stroke, cardiovascular death, and hospitalization due to heart failure.

14.7%

of US adults have **diabetes**¹

Diabetes & high blood pressure are **risk factors for kidney disease**

48%

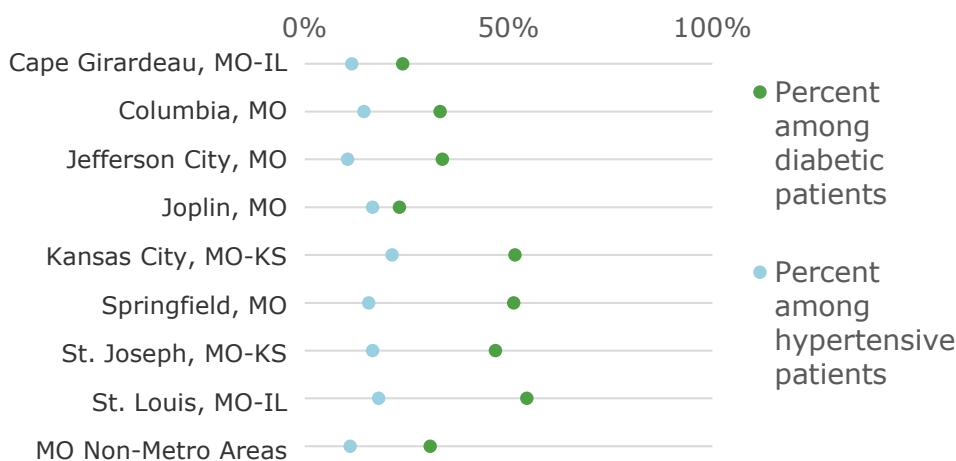
of US adults have **high blood pressure**²

35.5 million US adults are living with CKD but 90% do not know it.³

Don't let your kidney health go unchecked.

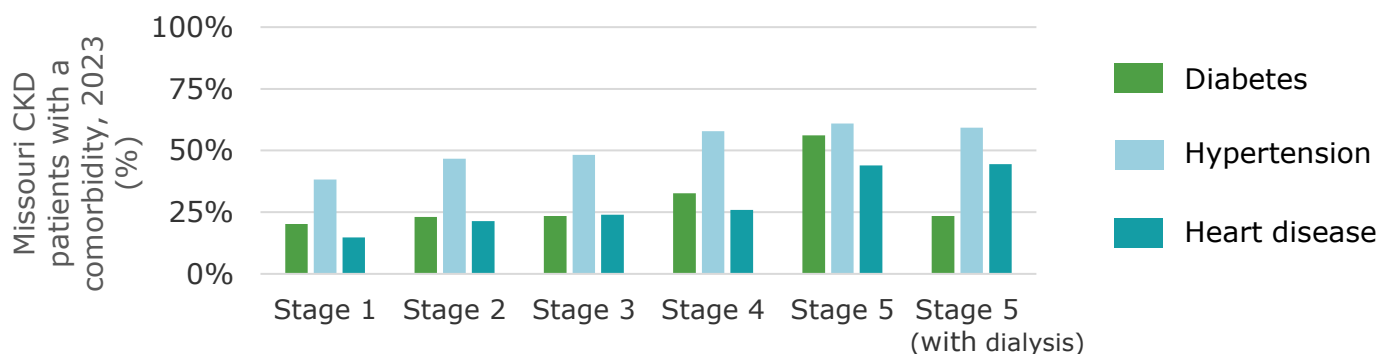
CKD Screening = Urine Test (uACR) + Blood Test (eGFR)

In Missouri, as few as **20 - 55%** of **diabetic patients** received both tests, and only **10 - 20%** of **hypertensive patients** received both in 2023.



- **Cape Girardeau** and **MO non-metro** areas were among the lowest-performing regions overall
- **Joplin** had the lowest CKD screening rate for those with **diabetes**
- **Jefferson City** had the lowest CKD screening rate for those with **hypertension**

Illness burden increases as CKD severity progresses from Stage 1 to Stage 5



Data includes a sample of Missouri's commercially insured population from MHVC's data warehouse that reside in Missouri and were aged 18 - 64 during the study timeframe.

The Missouri Health Value Collaborative thanks Champion for Health Care Value, Bayer, for contributions to this infographic and ongoing support of MHVC's community work.

Chronic Kidney Disease is Underdiagnosed in Missouri

In 2023, **1%** of Missourians aged 18–64 had a **CKD diagnosis**

NIH estimates that **9%** of US adults under 65 have CKD.

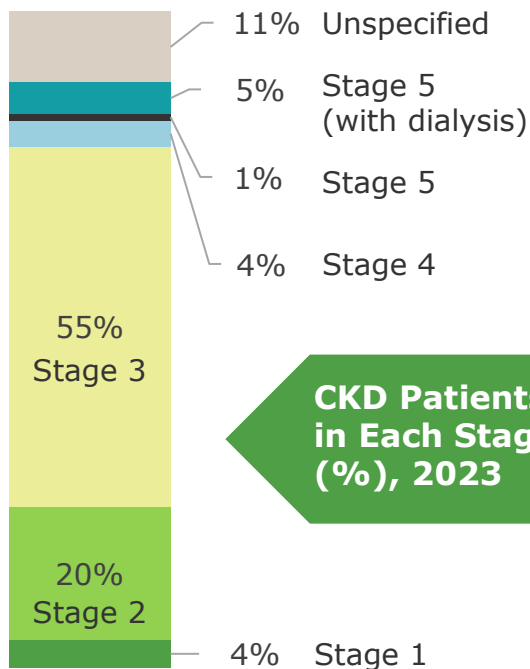
MO CKD population, 2023



53% of CKD patients were **male**



52 years – average age of CKD patient



CKD often goes undiagnosed until late stages, leading to underestimated prevalence using commercial claims data



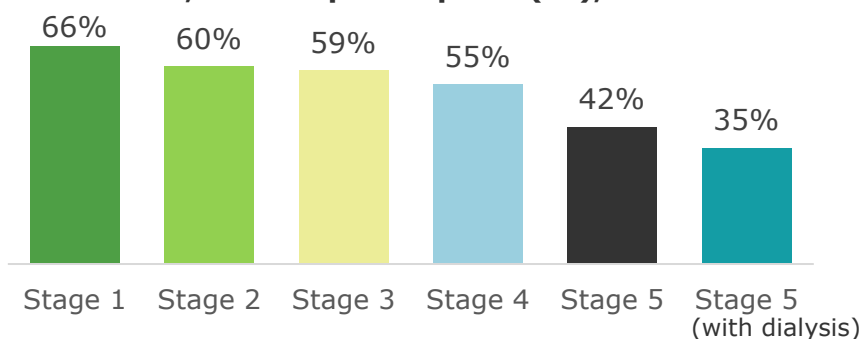
Over half of CKD patients were in **stage 3** – the stage where patients require treatment, are at high risk of disease progression, and possibly missed prevention



11% of CKD patients had an **unspecified stage** in their medical claims, making management of these patients more difficult

Early Detection to Delay Stage Progression is Key

CKD patients filling at least one script for an RAAS, SGLT2, or MRA prescription (%), 2023



- RAAS, SGLT2, MRA: drug classes used to slow kidney damage
- **Drug fills declined for Missouri patients in later CKD stages**

Measured across 1,806,442 commercially insured lives in Missouri, Age 18 – 64*, 2019 – 2023



MISSOURI
HEALTH
VALUE
COLLABORATIVE

1. <https://www.cdc.gov/diabetes/php/data-research/index.html>
2. <https://www.cdc.gov/high-blood-pressure/data-research/facts-stats/index.html>
3. <https://www.cdc.gov/kidney-disease/php/data-research/index.html>